

GERMAN ENGINEERING FOR NON STOP PRINTING

PRESENTING

marKode

markjet™ black



Bakshi Mark (P) Limited
Time: 10:10 AM
Weight: 25Kg
S.No: 4567



MRP: ₹ 250/-
Batch No: #B0471929007
MFD: 7/9/2020
EXP: 6/9/2030

- SCANNABLE BARCODES
- DYNAMIC PRINTING
- REAL TIME PRINTING
- SERIAL NUMBER
- MANUFACTURING DATE
- BEST BEFORE EXPIRY
- OPTION TO OPERATE AS MANY MARKJET BLACK WITH ONE SOFTWARE, A TRUE NETWORKING PRINTER

COMES WITH
2 YEARS WARRANTY

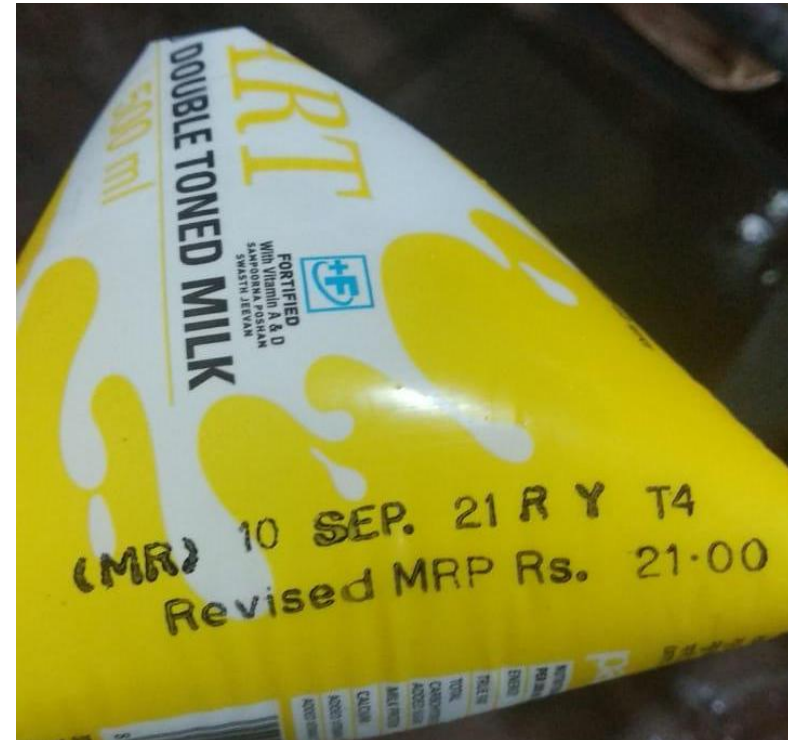
THERMAL INKJET
TECHNOLOGY

info@markode.in

www.markode.in

+91 9811670101

Printing Ink for Food Packaging - Code of Practice IS15495:2020



HP TIJ cartridge as per IS15495:2020



Wet Ink as per IS15495:2020



MARKJET BLACK



- Independently operating printing system
- Small and compact
- Controller and print head , all in one
- Simple and intuitive 3 – button operation with LED indicator lamps for user friendly system control
- Cost effective system energy
- Variable control via interface
- Simple Layout and parameters
- Smart card function for ink cartridge recognition and automatic setting of parameters
- Integrated photo sensor for automatic print trigger
- 2 years Warranty

Performance Data	Advanced
max. Speed at 300 dpi	60 m per minute
Layout length	1m
DPI horizontal	50 - 900
DPI vertical	300 / 600
Fonts	Printer + TTF
Number of layouts	9
Text fields	Yes
Counter fields	Yes
Date fields	Yes
Date offset	Yes
Variables Input	No
Logos	Yes
Barcodes	Yes
2-D Codes	No
Action fields	Yes
USB-Stick Data transfer	Yes
Ethernet interface	Yes
Password	Yes
Spitting	Yes
Warming	Yes
RS232	Yes
Internal sensor	Yes
External sensor	Yes
Encoder	Yes
In-/ Outputs	4I / 4O
Ink level display	LED
WLAN	No
Interference suppression	No
Rotary encoder	No
Keylock	No



DISPLAY CONTROLLER HMI

The HMI display is a “high-resolution OLED display” for direct input and controlling of print images. The additional start/stop buttons greatly simplify operations with data entry handled by the intuitive range of screens. Particularly useful if the printer is mounted inside a machine.

- Display of printing orders and operational conditions
- Arbitrary number of printed images
- Setting of Parameters and variable data
- Direct overview of settings
- Changing setting directly on the device
- Improved Ergonomics

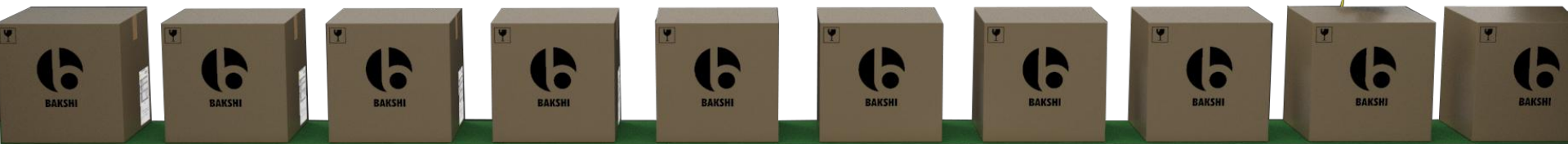


X1 JET



- Independently operating printing system
- Small and compact
- Controller and print head all in one
- Simple and intuitive 3 – button operation with LED indicator lamps for user friendly system control
- Cost effective system energy
- Variable control via interface
- Simple Layout and parameters
- Smart card function for ink cartridge recognition and automatic setting of parameters
- Integrated photo sensor for automatic print trigger
- Patented Click'n Print cartridge holder for quick and easy cartridge replacement

Performance Data	Basic	Advanced	Pro	Ultimate
Maximum speed at 300 dpi	30 m per minute	60 m per minute	90 m per minute	180 m per minute
Maximum resolution - horizontal - Vertical	50 to 900 dpi 300 dpi	50 to 900 dpi 300 / 600 dpi	50 to 900 dpi 300 / 600 dpi	50 to 900 dpi 300 / 600 dpi
Print / Character height	0.8 bis 12.5 mm	0.8 bis 12.5 mm	0.8 bis 12.5 mm	0.8 bis 12.5 mm
Maximum text length	1000 mm	1000 mm	2000 mm	4m
No. of text memories	9 texts	9 texts	9 texts	25 texts
Text Field	✓	✓	✓	✓
Counter	-	✓	✓	✓
Date field	✓	✓	✓	✓
Date offset	-	✓	✓	✓
Variable	-	✓	✓	✓
Action field	-	-	✓	✓
Logos	✓	✓	✓	✓
Barcodes	-	✓	✓	✓
2D- codes	-	-	✓	✓
Data transfer by USB stick	✓	✓	✓	✓
Ethernet	✓	✓	✓	✓
Web interface	✓	✓	✓	✓
EIA-232	✓	✓	✓	✓
Internal Sensor	✓	✓	✓	✓
External Sensor Connection	✓	✓	✓	✓
Encoder	✓	✓	✓	✓
I/O	2I/4D	2I/4D	2I/4D	2I/4D
Ink status display	LED	LED	LED	LED
Spitting	✓	✓	✓	✓
Temperature Warming	✓	✓	✓	✓



X1 JET Stitch



- Electronics installed behind cartridge to save space
- Up to 8 printheads can be stitched to print a 100 mm high print image
- Application in confined installation conditions
- Particularly advantageous when several printers are installed to print several 12.5mm print image simultaneously
 e.g. in a multi line deep draw packaging plant



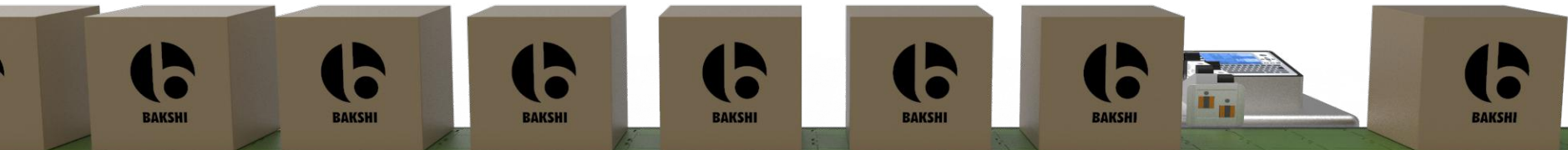
Performance Data	Basic	Advanced	Pro
Maximum speed at 300 dpi	30 m per minute	60 m per minute	90 m per minute
Maximum resolution - horizontal - Vertical	50 to 900 dpi 300 dpi	50 to 900 dpi 300 / 600 dpi	50 to 900 dpi 300 / 600 dpi
Print / Character height	0.8 bis 12.5 mm	0.8 bis 12.5 mm	0.8 bis 12.5 mm
Maximum text length	1000 mm	1000 mm	2000 mm
No. of text memories	9 texts	9 texts	9 texts
Text Field	✓	✓	✓
Counter	-	✓	✓
Date field	✓	✓	✓
Date offset	-	✓	✓
Variable	-	✓	✓
Action field	-	-	✓
Logos	✓	✓	✓
Barcodes	-	✓	✓
2D- codes	-	-	✓
Data transfer by USB stick	✓	✓	✓
Ethernet	✓	✓	✓
Web interface	✓	✓	✓
EIA-232	✓	✓	✓
Internal Sensor	✓	✓	✓
External Sensor Connection	✓	✓	✓
Encoder	✓	✓	✓
I/O	2I/4D	2I/4D	2I/4D
Ink status display	LED	LED	LED
Spitting	✓	✓	✓
Temperature Warming	✓	✓	✓

X2 JET Plus Touch



- Connections of up to 2 printheads
- Connection options for HP, LX, MX & XAAR printheads
- 5.7" touch screen for simple operation
- Parallel operations via touch – optimised full keypad & function keys
- 2 – channel version for making packaging on two independent production lines with different print starts & speeds

Performance Data	Advanced	Pro
Number of print heads	1 to 2	
Maximum speed at 300 dpi	Trident printheads: up to 200 m/min HP printheads: up to 90 m/min Lexmark printheads: up to 90 m/min	Trident printheads: up to 200 m/min HP printheads: up to 180 m/min Lexmark printheads: up to 240 m/min
Recommended speed for barcode applications (300 dpi)	up to 60 m/min with HP and 90 m/min with LX	
Number of production lines	2	
Maximum resolution - horizontal	50 to 900 dpi	
vertical -	300/600 with HP/LX, 192dpi with MX	
Print / symbol height	with HP & Lexmark printheads: 1 to 25 mm with Trident printheads: 3 to 200 mm	
Printhead distance	max. 5 mm with HP or Trident max. 10 mm with Lexmark	
Printing spacing	2 m	6 m
Text memory	Unlimited	
Display size	2,5" / 5,7" TFT display	
Text fields	✓	
Counter	✓	
Shift code	✓	
Date fields	✓	
Date offset	✓	
Logo	✓	
Variable	✓	
Active fields	✓	
Barcodes	✓	
2D-codes	✓	
USB stick backup	✓	
Ethernet	✓	
EIA232	✓	
USB	✓	
Inputs and outputs	Sensor (M8), rotary encoder (M8) 8 inputs / 8 outputs, stack light alarm	
Power Supply	90 to 240 V AC, 50/60 Hz / max. 100 W	
PC Software	iDesign	
Special functions	Data transfer /Backup with USB Stick, database link, text compilation in the system	

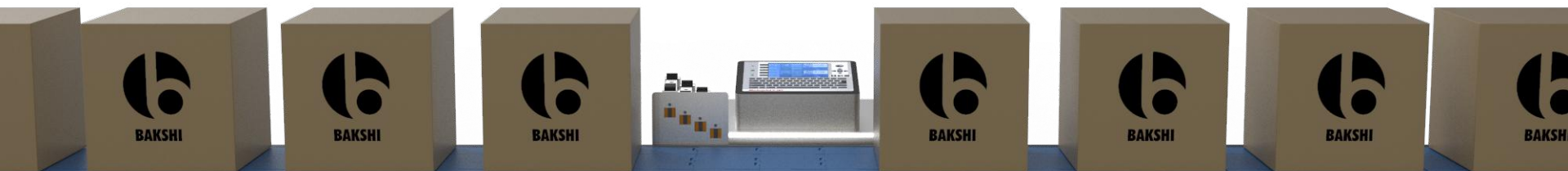


X4 JET Plus Touch



- Connections of up to 4 printheads
- Connection options for HP, LX, MX & XAAR printheads
- 5.7" touch screen for simple operation
- Parallel operations via touch – optimised full keypad & function keys
- 2 – channel version for making packaging on two independent production lines with different print starts & speeds

Performance Data	Advanced	Pro
Number of print heads	1 to 4	
Maximum speed at 300 dpi	Trident printheads: up to 200 m/min HP printheads: up to 90 m/min Lexmark printheads: up to 90 m/min	Trident printheads: up to 200 m/min HP printheads: up to 180 m/min Lexmark printheads: up to 240 m/min
Recommended speed for barcode applications (300 dpi)	up to 60 m/min with HP and 90 m/min with LX	
Number of production lines	4	
Maximum resolution - horizontal	50 to 900 dpi	
vertical -	300/600 with HP/LX, 192dpi with MX	
Print / symbol height	with HP & Lexmark printheads: 1 to 50 mm with Trident printheads: 3 to 400 mm	
Printhead distance	max. 5 mm with HP or Trident	
Printing spacing	2 m	6 m
Text memory	Unlimited	
Display size	2,5" / 5,7" TFT display	
Text fields	✓	
Counter	✓	
Shift code	✓	
Date fields	✓	
Date offset	✓	
Logo	✓	
Variable	✓	
Active fields	✓	
Barcodes	✓	
2D-codes	✓	
USB stick backup	✓	
Ethernet	✓	
EIA232	✓	
USB	✓	
Inputs and outputs	Sensor (M8), rotary encoder (M8)	
Power Supply	90 to 240 V AC, 50/60 Hz / max. 100 W	
PC Software	iDesign	
Special functions	Data transfer /Backup with USB Stick, database link,	

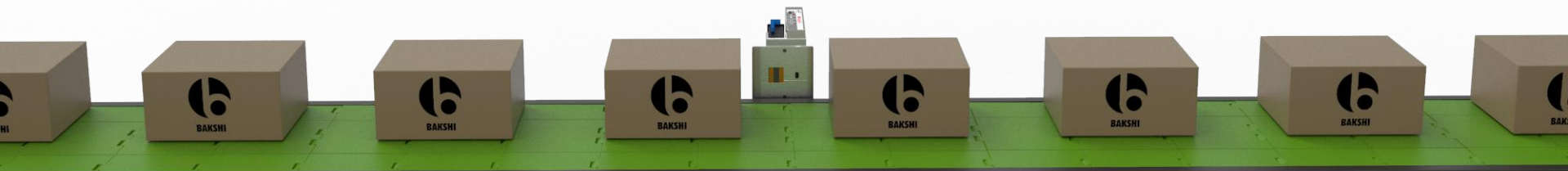


X1 JET LX



- Independently operating printing system
- Small and compact
- Controller and print head, all in one
- Simple and intuitive 3 – button operation with LED indicator lamps for user friendly system control
- Cost effective system energy
- Variable control via interface
- Simple Layout and parameters
- Integrated memory for automatic ink type detection and ink filling level storage
- Automatic voltage adjustment for solvent ink
- High speed Printing upto 240m/min

Performance Data	Basic	Advanced	Pro	Ultimate
Maximum speed at 300 dpi	30 m per minute	60 m per minute	90 m per minute	240 m per minute
Maximum resolution - horizontal - Vertical	50 to 900 dpi 300 dpi	50 to 900 dpi 300 dpi	50 to 900 dpi 300 / 600 dpi	50 to 900 dpi 300 / 600 dpi
Print / Character height	0.8 bis 12.5 mm	0.8 bis 12.5 mm	0.8 bis 12.5 mm	0.8 bis 12.5 mm
Maximum text length	1000 mm	1000 mm	2000 mm	4m
No. of text memories	9 texts	9 texts	9 texts	25 texts
Text Field	✓	✓	✓	✓
Counter	-	✓	✓	✓
Date field / time	✓	✓	✓	✓
Date offset	-	✓	✓	✓
Action field	-	✓	✓	✓
Logos	✓	✓	✓	✓
Barcodes	-	✓	✓	✓
2D- codes	-	✓	✓	✓
Data transfer by USB stick	✓	✓	✓	✓
Ethernet	✓	✓	✓	✓
Web interface	✓	✓	✓	✓
EIA-232	✓	✓	✓	✓
Internal Sensor	✓	✓	✓	✓
External Sensor	✓	✓	✓	✓
Encoder	✓	✓	✓	✓
I/O	2I / 4O	2I/4O	2I/4O	2I/4O
Ink status display	LED	LED	LED	LED
Spitting	✓	✓	✓	✓
Temperature Warming	✓	✓	✓	✓



IP JET



Performance data	Pro
Maximum print speed HP (Hewlett Packard)	90 m per minute
Print resolution - horizontal - vertical	50 to 900 dpi 300 or 600 dpi
Maximum print height	12.5 mm
Maximum text length	2 m
Text field	yes
Counter	yes
Time	yes
Date field	yes
Date offset	yes
Logo	yes
Input of variables	no
Action fields	yes
1D code / 2D code	yes / yes
Data transfer by USB stick	yes
Ethernet	yes
EIA232	yes
Password levels	yes
Configurable: 2 inputs/4 outputs	yes

Technical data	
Mains unit supply voltage	100 - 240 VAC / 50 - 60 Hz (1~)
Unit supply voltage	12 - 24 VDC
Power consumption, maximum	25 W
Power consumption, standby	1.6 W
Ambient temperature	5 to 40°C
Protection class (with overpressure)	IP 65
Splash guard	yes
Certification	CE

- IP 65 Protection
- High Resolution Coding
- Suitable for harsh environments
- Independently operating printing system
- Small and compact
- Controller and print head , all in one
- Simple and intuitive 3 – button operation with LED indicator lamps for user friendly system control



X1 JET XR



Performance Data	Basic	Advanced	Pro
Max. printing speed at 180 dpi	30 m per minute	60 m per minute	67 m per minute
Max. Print height	71 mm	71 mm	71 mm
Max. number of printheads	1	1	1
Max. number of production lines	1	1	1
Text field	Yes	Yes	Yes
Counter	No	Yes	Yes
Time	Yes	Yes	Yes
Date field / date offset	Yes / No	Yes/Yes	Yes/Yes
Logo	Yes	Yes	Yes
Variables	No	No	No
Action fields	No	Yes	Yes
1D code / 2D code	No / No	Yes/No	Yes/No
Data transfer by USB stick	Yes	Yes	Yes
Ethernet	Yes	Yes	Yes
EIA232	Yes	Yes	Yes
Password levels	No	No	No
Configurable inputs and outputs	Yes	Yes	Yes

- Printing system based on tried and tested XAAR Piezo technology
- Easy cleaning of jets via integrated maintenance
- low ink consumption despite high printing performance
- internal ink reservoir allows ink change without interruption
- large, reliably readable barcodes
- simple inkjet printing system start-up
- 500 individually controlled jets

Technical Data	Basic	Advanced	Pro
Power supply	90 to 240 V AC		
Power consumption	50 W		
Protection class	IP40		
Ambient temp. for XR 980 oil based ink	15 to 35 °C		
Relative humidity	20 to 85 %, non-condensing		
Certification	CE		

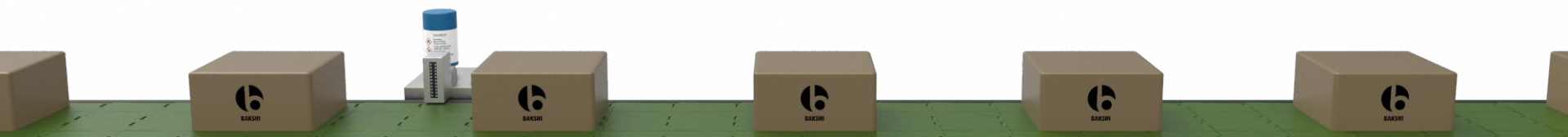


X1 JET MX



- Autonomously operating Trident Piezo printing system
- Cleaning station integrated in the printing system
- All in one printhead, ink system, cleaning station and controller
- Simple and intuitive 3 – button operation with LED indicator lamps
- Available as 50 or 100 mm printheads
- In Compact, Top or Vario versions
- With Scan true ink

Performance Data	Basic	Advanced	Pro
maximum speed at 200 dpi	30 m per minute	60 m per minute	90 m per minute
maximum resolution - horizontal - vertical	50 to 600 dpi 192 dpi	50 to 600 dpi 192 dpi	50 to 600 dpi 192 dpi
Print/character height	3 to 50/100 mm	3 to 50/100 mm	3 to 50/100 mm
maximum text length	1000 mm	1000 mm	2000 mm
No. of text memories	9 texts	9 texts	9 texts
Text field	✓	✓	✓
Counter	-	✓	✓
Date field/time	✓	✓	✓
Date offset	-	✓	✓
Action field	-	✓	✓
Logos	✓	✓	✓
Barcodes	-	✓	✓
2D-Codes	-	-	✓
Data transfer by USB Stick	✓	✓	✓
Ethernet	✓	✓	✓
EIA-232	✓	✓	✓
external sensor	✓	✓	✓
Encoder	✓	✓	✓
I/O	2I / 4O	2I / 4O	2I / 4O
Ink status display	LED	LED	LED
Nozzle cleaning pulse	✓	✓	✓
Printer- and True Type - fonts	✓	✓	✓



INTEGRA PP 108



- Printing heights up to 108 mm with no offset
- High-resolution print up to 360 dpi vertically
- Speed up to 150 m/min. at 360 dpi
- Printing of high-resolution graphics and logos, also small fonts from 1mm high.
- Excellent barcode and greyscale capability
- Easy commissioning of the ink system Large volume internal ink reservoir
- Pigmented MOF (mineral oil-free) ink, optimised for printing onto absorbent surfaces
- Two 700ml ink tanks for 2 color printing
- System starts up in less than 1 minute
- Side and top down printing possible

Performance Data	Basic	Advanced	Pro	Ultimate
Max Speed at 360 dpi	30 m per minute	60 m per minute	90 m per minute	150 m per minute
Layout length	0,97m	0,97m	0,97m	0,97m
DPI horizontal	360 (50-900)	360 (50-900)	360 (50-900)	360 (50-900)
DPI vertical	360	360	360	360
Fonts	Printer + TTF	Printer + TTF	Printer + TTF	Printer + TTF
Number of layouts	9	9	9	9
Text fields	Yes	Yes	Yes	Yes
Counter fields	No	Yes	Yes	Yes
Date fields	Yes	Yes	Yes	Yes
Date offset	No	Yes	Yes	Yes
Variables	No	No	No	No
Logos	Yes	Yes	Yes	Yes
Barcodes	No	Yes	Yes	Yes
2-D Codes	No	No	Yes	Yes
Action fields	No	Yes	Yes	Yes
USB-Stick Data transfer	Yes	Yes	Yes	Yes
Ethernet interface	Yes	Yes	Yes	Yes
Password	No	No	No	Yes
EIA232	Yes	Yes	Yes	Yes
Internal sensor	No	No	No	No
External sensor	Yes	Yes	Yes	Yes
Encoder	Yes	Yes	Yes	Yes
In-/ Outputs	4E/4A	4E/4A	4E/4A	4E/4A
Ink level display	LED	LED	LED	LED



WET INK CODERS



m100

m100 SERIES : ROTARY

These are most suitable for offline / online continuous & locational marking & coding application.

Contact type, ideally suited for printing Batch No., Pkg. Dt., Exp. Dt., MRP, Logos, Meter & Sequential Marking on most of the products / substrates / packs

Benefits:

- Compact
- Value for money
- Minimum servicing
- High performance
- Consistency in quality of printing
- Easy to install & operate
- Provides perfect code at the right place
- Rugged metal construction



m110



m130

MODEL	m100	m110	m130
General Specifications: Operation	Friction Driven	Friction Driven	Friction Driven
Purpose	Hand Operated	On Line Continuous Machine	
Printing Area (In mm) Lines of Print	90 x 330 Up to 5	25 x 210 Up to 4	90 x 425 Up to 5
Typefaces (Easy Changeable Rubber Grooved	.	.	.
Character Size (in mm) (Print Area Dependent)	Up to 50	Up to 25	Up to 50
Printing Method (Re- changeable Adjustable Circular ink Cartridge)	.	.	.
Printing Speed (Impr./Min.)	35	150	60
Printing Medium (Fast Drying Ink)	Water Base	Solvent Base	Water Base
Ink Colours (Black,Blue, Brown, Green , Red & Violet)	.	.	.
Installation (Vertical, Horizontal, Angled)	.	.	.
Printing Facilities : Fixed & Variables Text Variable Text Logos & Brand Name
Weight (Kg) Microprocessor (Kg)	0.5	4	5
Dimension (H x L x W in mm) Microprocessor (H x L x W in mm)	175x250x100	115x280x330	200x375x100

WET INK CODERS

MODEL	m210	m220	m230
General Specifications: Operation	Digital Timer	Timer & Sensor	PLC Based
Purpose	Table Top	On Line Intermittent Motion	Online for Jars/Tins/Bottles
Printing Area Standard (35mm x 25mm) Optional (As per requirement)	• •	• •	• •
Lines of Print Standard Optional (Upto 8) Locational Printing	Up to 5 • •	Up to 4 • •	Up to 4 • •
Typefaces (Easy Changeable Rubber Stereos Grooved/Flat	• G or F	• G	• G
Character Size (1 mm to 50 mm) (Print Area Dependent)	•	•	•
Printing Method (Re- Changeable Adjustable Circular ink Cartridge)	•	•	•
Printing Speed (Impr./Min.) Standard Optional	120 120	120 120	100 200
Printing Medium (Fast Drying Ink)	•	•	•
Ink Colours (Black,Blue, Brown, Green , Red & Violet)	•	•	•
Installation (Vertical, Horizontal, Angled)	V,A	V,H,A	V,H,A
Printing Facilities : Fixed & Variables Text	•	•	•
Variable Text	•	•	•
Logos & Brand Name	•	•	•
Physical Characteristics : Compressed Air (2 Bar Pressure)	•	•	•
Power Supply (230V, 50 Hz)	•	100	•
Motor with Gear Box			1 HP AC Motor
Weight (Kg)	12	8	100
Dimension (H x L x W in mm)	370x270x100	100x340x560	800x1500x300

m200 SERIES : PNEUMATIC

These are most suitable for offline / online marking & coding, To be used in semi-automatic table top or line intermittent motion FFS or online automatic on jars / containers / applications.

Contact type, ideally suited for printing Batch No., Pkg. Dt., Exp. Dt., MRP, Logos, Meter & Sequential Marking on most of the products / substrates / packs

Benefits:

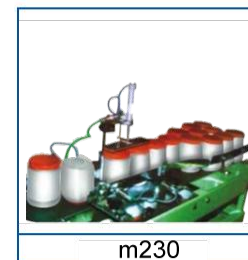
- High performance
- Compact
- Value for money
- Minimum servicing
- Consistency in quality of printing
- Rugged metal construction
- Easy to install & operate
- Provides perfect code at the right place



m210



m220



m230

WET INK CODERS



m310

m300 SERIES : MECHANICAL

These are most suitable for offline / online marking & coding, To be used in semi-automatic table top applications only.

Contact type, ideally suited for printing Batch No., Pkg. Dt., Exp. Dt., MRP, Logos, Meter & Sequential Marking on most of the products / substrates / packs

Benefits:

- Compact
- Value for money
- Minimum servicing
- High performance
- Consistency in quality of printing
- Easy to install & operate
- Provides perfect code at the right place
- Rugged metal construction

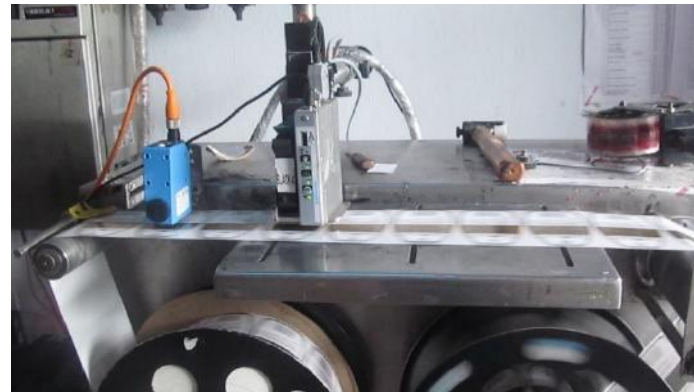
MODEL	m310
General Specifications: Operation	PMDC Motor Driven
Purpose (Table Top)	.
Printing Area Standard (35mm x 25mm) Optional (As per requirement)	.
Standard (Up to 5) Optional (Upto 8)	.
Typefaces (Easy Changeable Rubber Stereos	.
Grooved/Flat	.
Character Size (1 mm to 50 mm) (Print Area Dependent)	.
Printing Method (Re- Changeable Adjustable Circular ink Cartridge)	.
Printing Speed (Impr./Min.)	120
Printing Medium (Fast Drying Ink)	.
Ink Colours (Black,Blue, Brown, Green , Red & Violet)	.
Printing Facilities : Fixed & Variables Text	.
Variable Text	.
Logos & Brand Name	.
Physical Characteristics :	230 V, 50 Hz
Power Supply	100W
Power Rating	15
Weight (Kg)	370x270x100
Dimension (H x L x W in mm)	



OEM PARTNER
Bühm
Weber
Group
LABELING & CODING SOLUTIONS
Markoprint
HIGH QUALITY MADE IN GERMANY

markjet Thermal Inkjet Printer *marKode*[®]

Perfect code at right place





OEM PARTNER



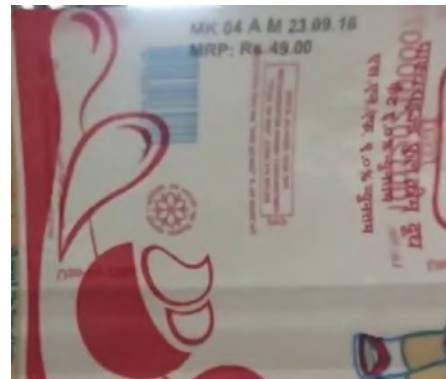
Webe
LABELING & CODING SOLUTIONS
Markoprint

HIGH QUALITY MADE IN GERMANY

markjet Thermal Inkjet Printer

marCode®
Perfect code at right place

Samples



Consumables



Inks, Solvents for Food Pharma Applications



Cartridges, ink Roller



Rubber Stereos Grooved / Flat
1mm to 50 mm



Labels & ribbons for Barcode Label printers.



Brass Types & Steel Types



Solid Ink Rolls

Printing Ink for Food Packaging- Code of Practice IS-15495:2020



Coding Accessories



Feeder & Stacker



Winder Rewinder

CONTRACT CODING

Contract Coding is , where we employ On Site & or Off Site our own Manpower, Equipment, Consumables and Spares to print variable / fixed data / barcodes / Logos and charge you on Per Print Basis.

CONTRACT CODING

- 100% Coding Guarantee
- No Legal Hassles
- No-Headache for Inventory or Maintenance

Contract Coding: On Site Operations at Parag Dairy - Meerut



Contract Coding: on Site Operations at Parag Dairy - Noida



Contract Coding: off Site Operations for Perfetti Van Melle



SIMPLY UNSTOPPABLE

markOn™
conveying reliability



CUSTOMIZED CONVEYING SOLUTIONS

From Unloading of Raw Material to Warehouse to Production
to Packaging to Store to Loading of Finished Goods

With Integration of:

Aligning / Coding / Collating / Pick-n-Place / Palletizing / Profiling /
Shrink Wrapping / Sorting / Taping / Track & Trace / Vision / Weighing

marKode
Perfect code at right place

GERMAN ENGINEERED TIJ PRINTERS



BAKSHI MARK PVT. LTD.

An ISO 9001: 2015 Certified Co.

Unit I: Khasra No. 83/23, Street No. 1A, Udyog Nagar, Mundka, New Delhi - 110041, India

Unit II: Plot No. 134, Sector-7, IMT Manesar, Gurugram, Haryana - 122050, India

CIN No.: U30008DL2004PTC130884

+91 9811670101 | info@markode.in | www.markode.in



FACING PROBLEM IN LOADING AND UNLOADING ?

- Faster Loading & Unloading
- Reduce Handling Cost by 50%
- Plug & Play Model
- Quick Delivery Commitment
- Reverse & Forward System
- Increase Work Efficiency
- High Throughputs
- Saves Time, Energy & Money
- Safe & Reliable Operation
- Prevent Product Damage During Transportation



Most of our customers have association with us for more than 15 years.

Our Esteemed Customers



Overseas Customers



Bakshi Mark Pvt. Ltd.

An ISO 9001-2015 Certified Co.

**Factory/Office: Khasra No. 83/23, Street No.1A,
Udyog Nagar, Mundka, New Delhi – 110041, India**

**Regd. Off: 5/26, Progressive Market, Jwala Heri,
Paschim Vihar, New Delhi – 110063 (India)**

+91 98-11-670101 | info@markode.in | www.markode.in

GST No.07AACCB5786B1ZS

CIN No. U30008DL2004PTC130884

Unit-I – Mundka, New Delhi, Unit-II IMT Manesar, Haryana



BAKSHI MARK PVT. LTD.

• Marking • Coding • Traceability • Conveying • Packaging

Thank You!